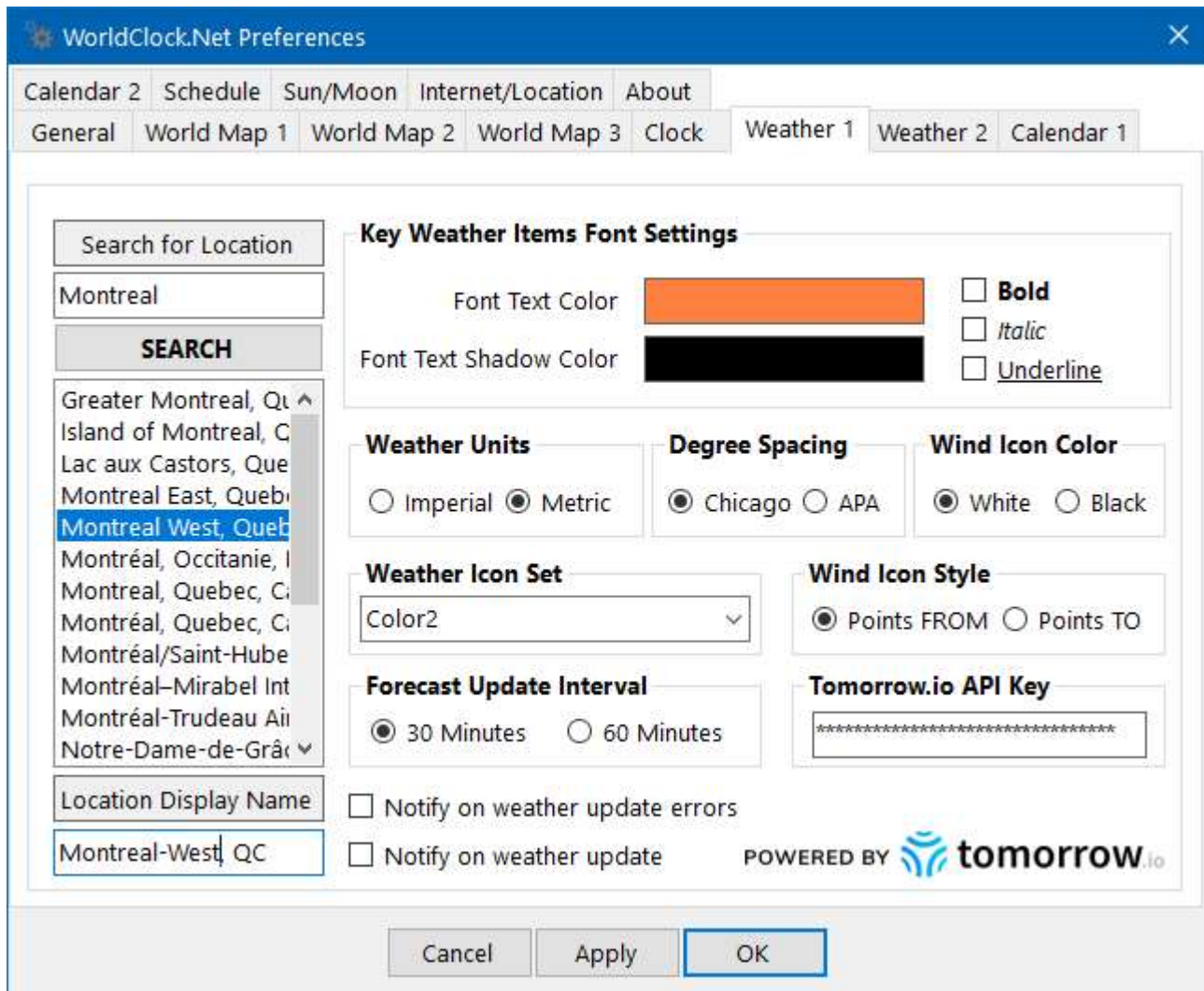


HOW TO ENABLE WORLDCLOCK'S WEATHER FEATURES

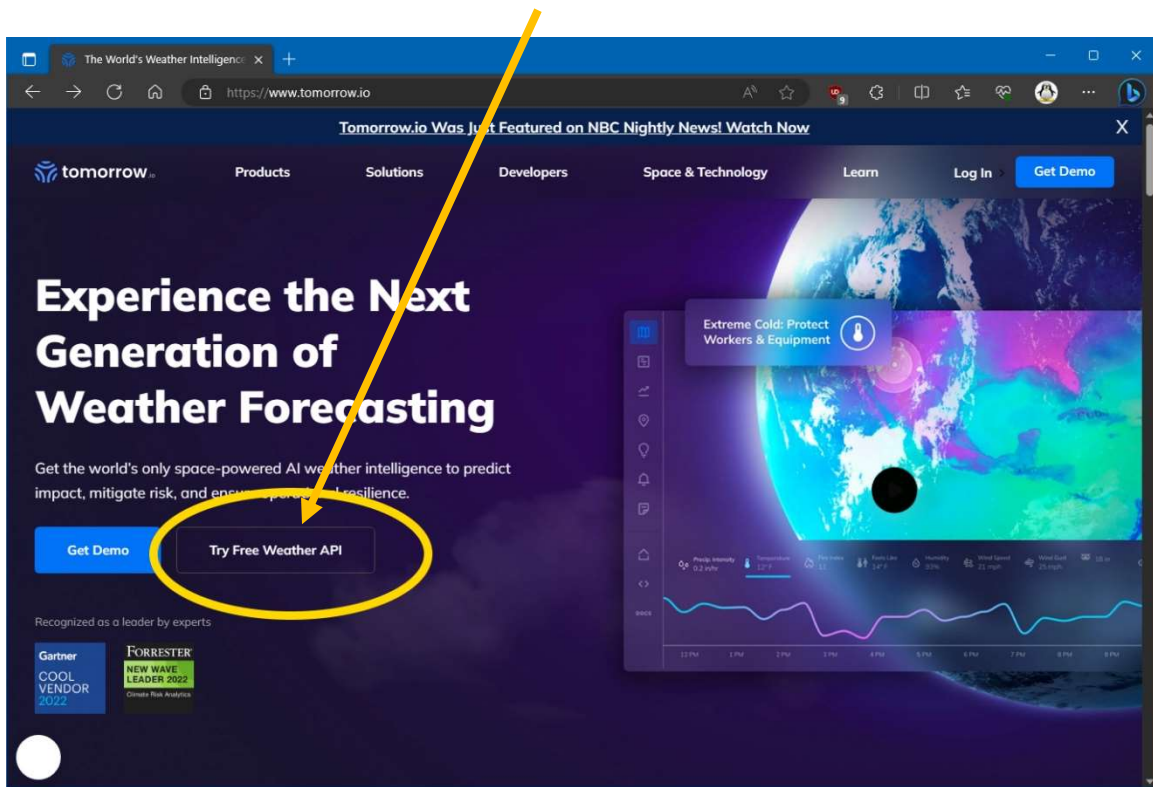
WorldClock v7.1 (Classic) and v1.1 (.Net) has changed the way it receives weather data; principally, we are now using a new weather provider. As such, there's an extra step you need to perform before you can use any of the weather features in WorldClock. This document will walk you through the process.

First, go to your **Preferences** and select the **Weather 1** tab (**Weather (Setup)** in Classic) as below:

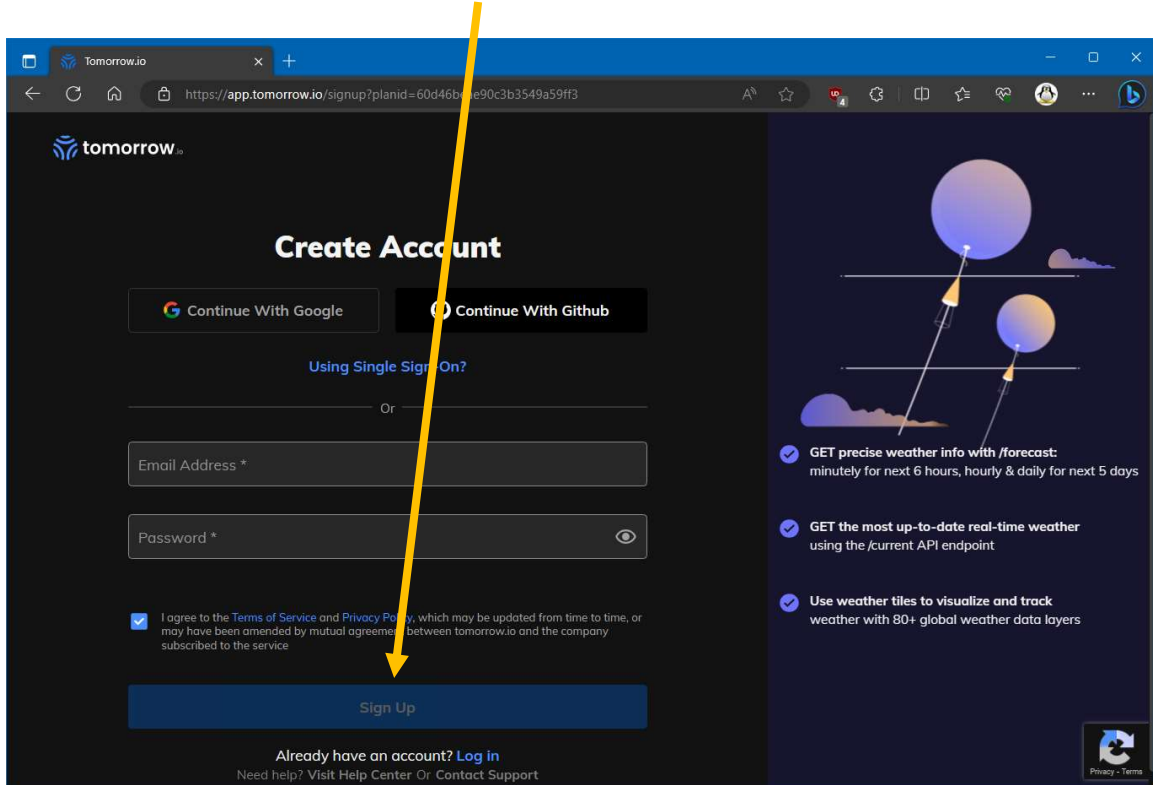


WorldClock's new weather service provider is **Tomorrow.io**. This service is completely free, but they require users to obtain a key (they call it a "token") to use their service. As such, you will see a new field named **Tomorrow.io API Key**. You must acquire this key from the Tomorrow.io website and enter it here. Simply follow the process below to get your key.

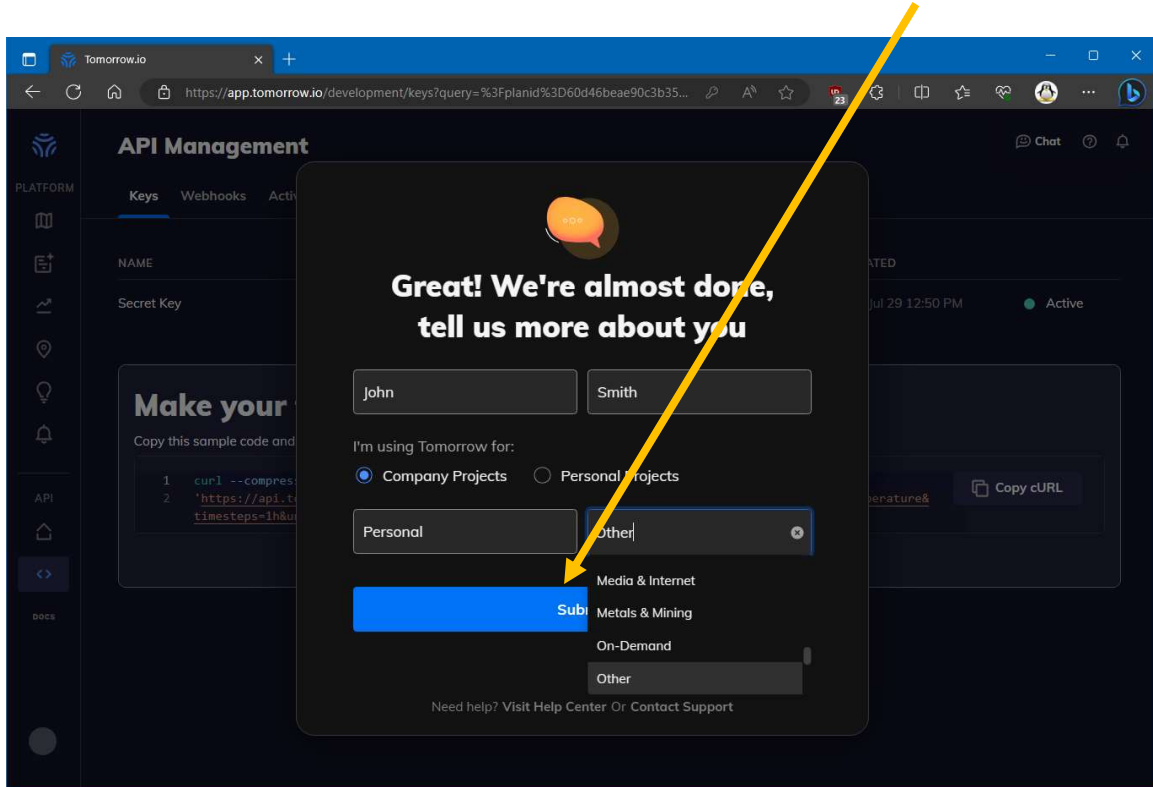
First, go to the <https://www.tomorrow.io> website (Ctrl-Click on this link to open it in a new tab/window of your web browser) and then click on the **Try Free Weather API** button.



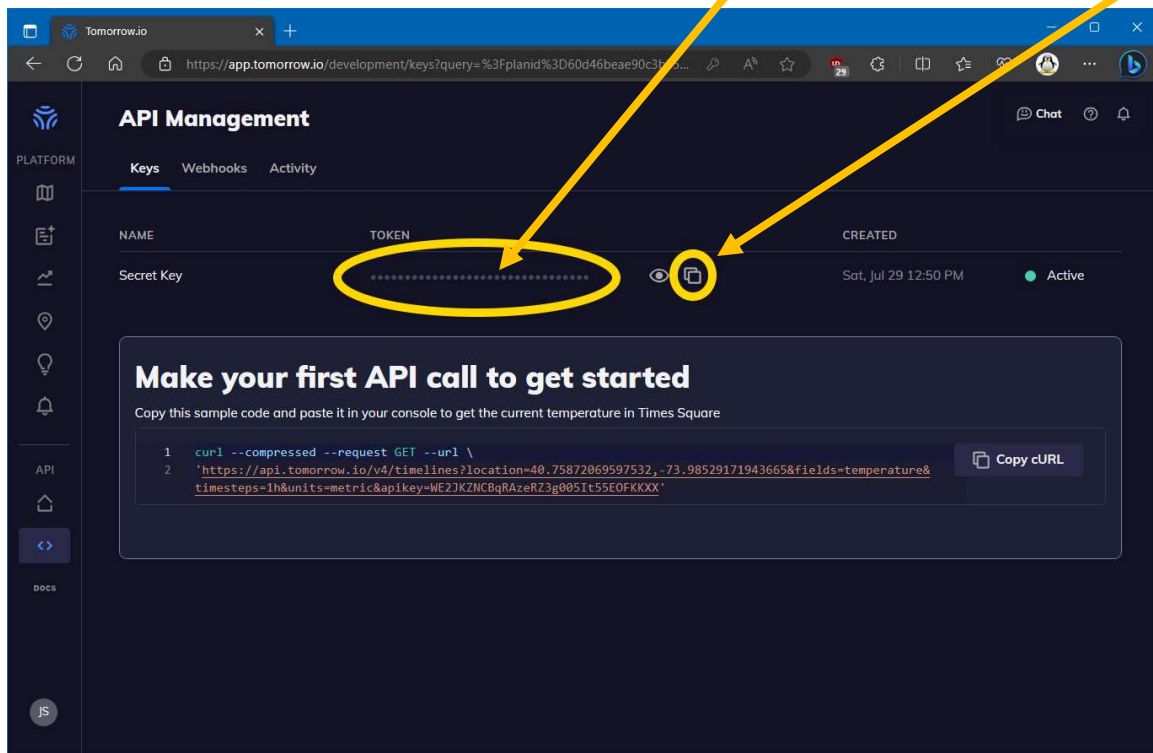
You will now be brought to their account creation page; enter your email address and a password for your Tomorrow.io account and then click on the **Sign Up** button.



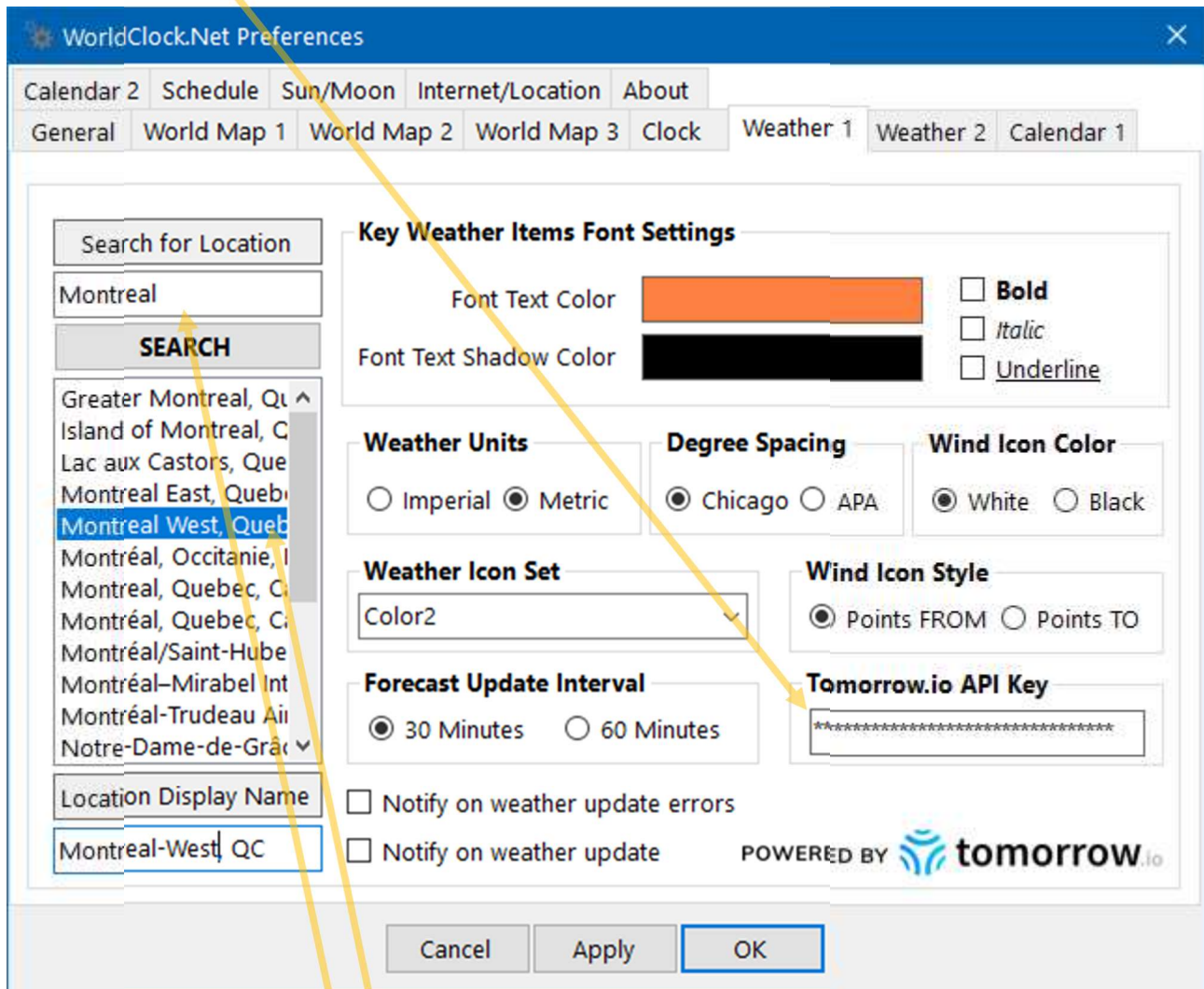
You will now need to enter your name; in the **I'm using Tomorrow for:** field, I suggest you select **Personal Projects**. For the **Business** field, I suggest you select **Other**. Now click on the **Submit** button.



The process is now complete, and you can find your **API Key** in the **Secret Key** field. Now click on the **copy icon** to save a copy of your key in your Windows clipboard.



Now go back to WorldClock's **Weather 1** tab (**Weather (Setup)** in Classic) and paste your key into the **Tomorrow.io API Key** field. WorldClock will now run a quick test to check that the key is valid and, if so, all weather features will now be enabled.

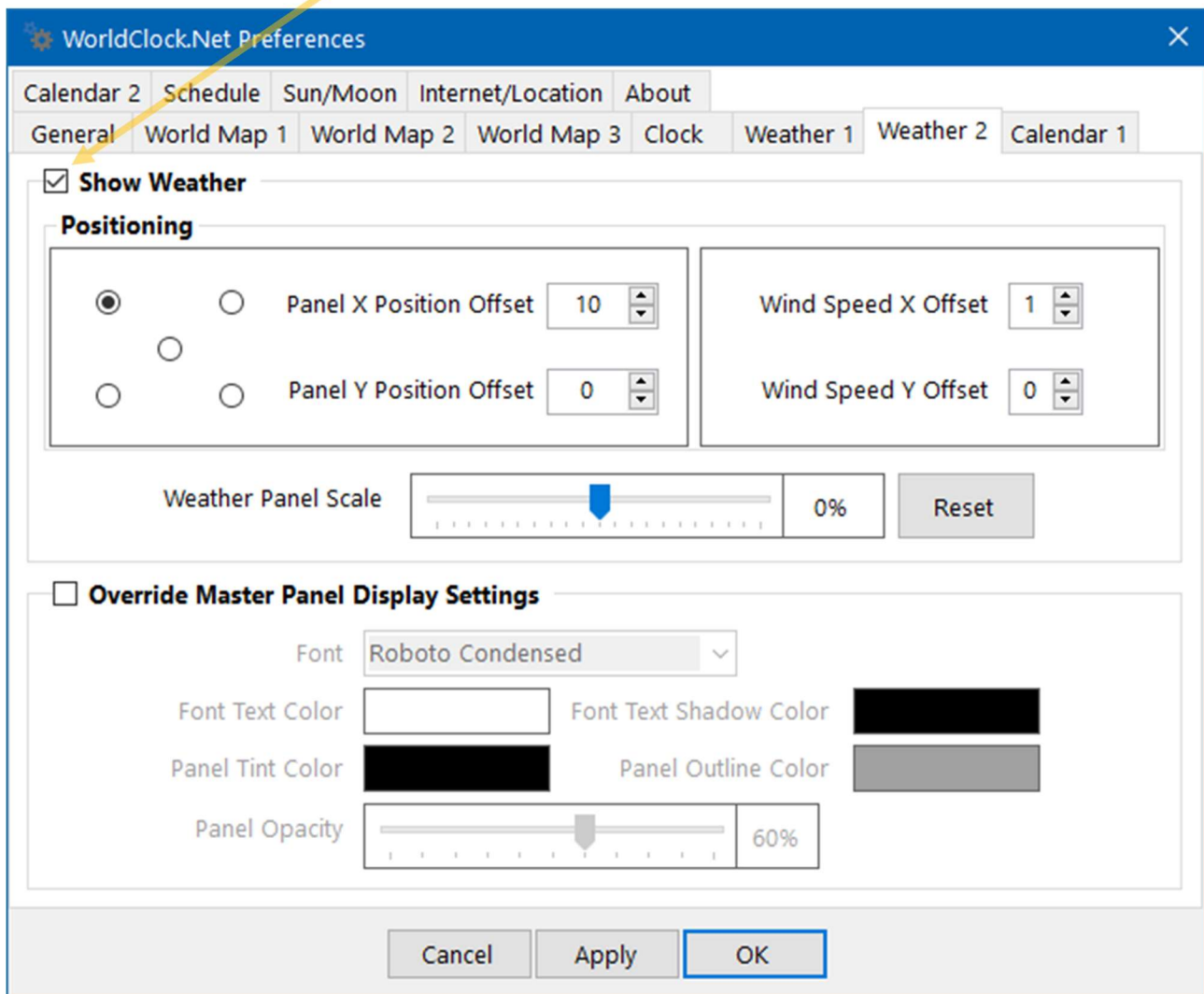


The next thing you must do is select your weather location. You do this by entering the name of your preferred location in the box under **Search for Location** and then clicking the **SEARCH** button.

The list-box below the **SEARCH** button will now be populated with all matches for your requested location; select the location of your choice by clicking on the appropriate item in this list. Finish configuring your weather options and then click the **OK** button to save your settings.

The **Weather Forecast** popup menu item as well as the **Weather Information Panel** on your main display (wallpaper in Classic) should now all be enabled. You can also configure your weather panel appearance and position by going to the **Weather 2 (Weather (Display))** in Classic) tab of your **Preferences** as below.

Don't forget to click on the **Show Weather** checkbox to enable the weather panel.



TOMORROW.IO RATE LIMIT

Please note that there is a **500 requests/day** and a **25 requests/hour** use limit on your free Tomorrow.io account. **The daily count is reset every day at midnight (UTC), and the hourly count is reset at the top of the hour.** WorldClock performs about 8 requests per hour, so these limits are more than sufficient for normal use, even if your computer is running 24/7. However, I would caution you not to use your key with other software applications. There are other applications (desktop, phone, and websites) that use Tomorrow.io as their weather source; you will know if they do because they will ask for your Tomorrow.io API key. If you are using one or more of these applications in addition to WorldClock, I would strongly recommend that you create a separate Tomorrow.io account (each with its own unique API key) for each of these applications to avoid hitting this limit.

You may also want to experiment with different locations when you first set up their service but be aware that you can easily exceed the 25 request/hour rate limit doing this. Note that when you hit this limit, they stop sending you updates and WorldClock will continue to use the last good update. As such, the weather display could easily become out of date or even totally wrong if the last good update was for a different location. Should this occur, simply wait until the top of the hour for the count to reset.